

FOR LEASE | GARDEN OFFICE SUITE

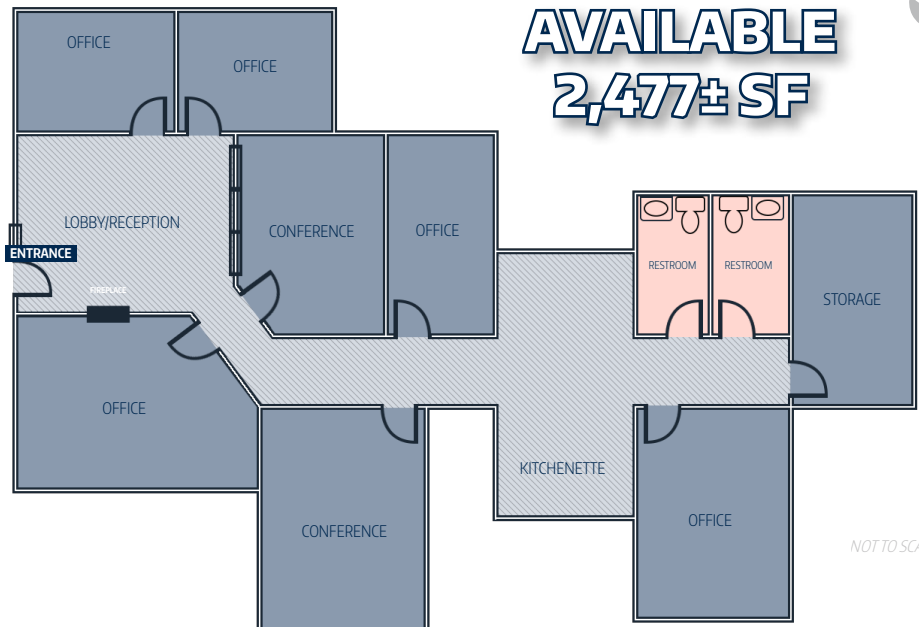
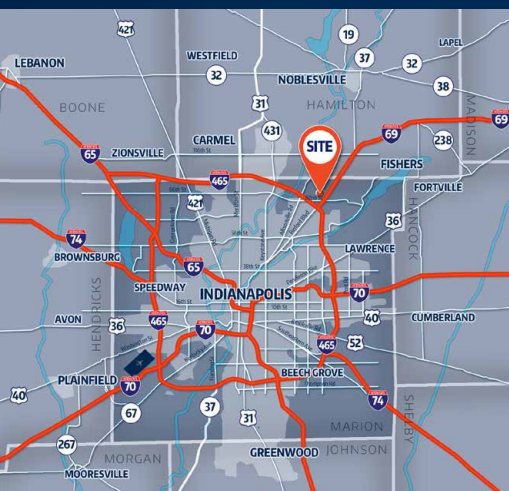
2,477± SF | NORTHEAST INDIANAPOLIS MARKET

McClure
COMMERCIAL & INDUSTRIAL REAL ESTATE

Two Metroplex // 8383 Craig Street, Suite 280 // Indianapolis, IN 46250 (MARION COUNTY)

PROPERTY FEATURES:

- **FOR LEASE: 2,477± SF office suite**
- Ample at-the-door parking
- Suite is configured with 2 conference rooms, lobby/reception area, 5 private offices, 2 restrooms, kitchenette and large storage room.
- Immediate occupancy
- 80,000± SF one-story, multi-tenant *garden style* office complex
- Site is 8.9± Acres of "park like" setting.
- Northeast Indianapolis location with convenient access to interstate (I-69 & I-465), retail, hospitality, and entertainment amenities with easy commutes to many nearby neighborhoods and suburbs
- Located just off I-69, north of East 82nd Street on Craig Street
- **Lease rate:**
 - » \$16.95/SF/YR (includes all utilities)
 - » 3% annual increases



- **AT-THE-DOOR PARKING**
- **LEASE RATE OF \$16.95/SF/YR**

www.mcclurecire.com

For all your Commercial & Industrial Real Estate needs, please contact:

Ted J. McClure // 317.457.0577 // mcclurecire@cs.com